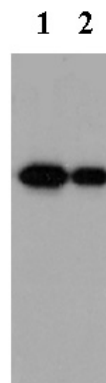


Monoclonal antibodies specific to the His-Tag are used to identify, detect, and purify polyhistidine fusion proteins in bacteria, insect cells, and mammalian cells. Anti His-Tag mouse mAb recognizes His-Tag placed at N-terminus, C-terminus, and internal regions of fusion proteins.

Product Information

Catalogue No.	M2003
Host Species	Mouse
Clonality	Monoclonal
Isotype	IgG1
Immunogen	A synthetic peptide HHHHHH coupled to KLH
Antigen MW	Depends on tagged protein
Species Reactivity	n/a
Format	Purified IgG1 in PBS + 50% glycerol + 0.02% NaN ₃
Concentration	1 mg/ml
Quantity	100 µg
Intended use	For research use only



Western blot analysis of His-Tag fusion protein with anti-His-Tag mouse mAb diluted at 1:2,000 (lane1) and 1:5,000 (lane2).

Applications

		Controls		Recommended* Dilution
		Positive	Negative	
IP Immunoprecipitation	Yes	His-Tag fusion protein	Untransfected cell lysates	1:100 – 1:500
WB Western Blotting	Yes	His-Tag fusion protein	Untransfected cell lysates	1:1,000 – 1:10,000
IHC (P) Immunohistochemistry (Paraffin)	n.t.	n.t.	n.t.	n.t.
IHC (F) Immunohistochemistry (Frozen)	n.t.	n.t.	n.t.	n.t.
IF Immunofluorescence	Yes	His-Tag fusion protein	Untransfected cell lysates	1:200 – 1:1,000
ELISA	n.t.	n.t.	n.t.	n.t.

n.t. – antibody not tested for this application.

*Recommended dilutions are given as a guide only. Users should optimize antibody dilutions for their specific applications.

Storage

Caution: this product contains sodium azide (0.02 % NaN₃).

Freezing at -20°C in small aliquots is the optimal storage condition. Aliquotting minimizes damage due to freezing and thawing, as well as contamination introduced by pipetting from a single vial multiple times. Aliquots should be frozen and thawed only once, with any remainder kept at 4°C.

This product is stable for 12 months at -20°C.