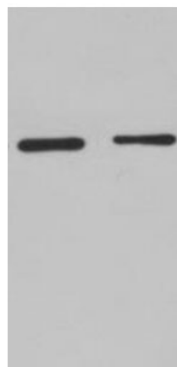


GST-Tag antibody detects the fusion protein during purification, as well as the cleavage of the GST-Tag from the protein of interest. GST-Tag antibody can recognize C-terminus, internal, and N-terminus GST-Tagged proteins.

Product Information

Catalogue No.	M2002
Host Species	Mouse
Clonality	Monoclonal
Isotype	IgG1
Immunogen	Full-length GST protein
Antigen MW	Depends on tagged proteins
Species Reactivity	n/a
Format	Purified IgG1 in PBS +50% glycerol + 0.02% NaN ₃
Concentration	1 mg/ml
Quantity	100 µg
Intended use	For research use only

1:2000 1:5000



Western blot analysis of GST-Tag fusion protein with anti GST-Tag mouse mAb diluted at 1:2,000(lane1) and 1:5000(lane2).

Applications

		Controls		Recommended*
		Positive	Negative	Dilution
IP Immunoprecipitation	Yes	n.t.	n.t.	n.t.
WB Western Blotting	Yes	GST fusion protein	Untransfected cell lysates	1:1,000 – 1:10,000
IHC (P) Immunohistochemistry (Paraffin)	n.t.	n.t.	n.t.	n.t.
IHC (F) Immunohistochemistry (Frozen)	n.t.	n.t.	n.t.	n.t.
IF Immunofluorescence	Yes	n.t.	n.t.	n.t.
ELISA	n.t.	n.t.	n.t.	n.t.

n.t. – antibody not tested for this application.

*Recommended dilutions are given as a guide only. Users should optimize antibody dilutions for their specific applications.

Storage

Caution: this product contains sodium azide (0.02 % NaN₃).

Freezing at -20°C in small aliquots is the optimal storage condition. Aliquotting minimizes damage due to freezing and thawing, as well as contamination introduced by pipetting from a single vial multiple times. Aliquots should be frozen and thawed only once, with any remainder kept at 4°C.

This product is stable for 12 months at -20°C.