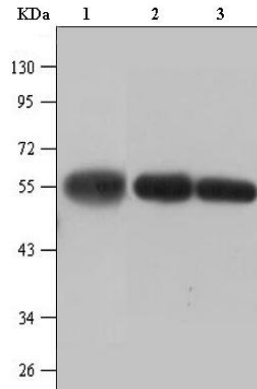


Microtubules are constituent parts of the mitotic apparatus, cilia, flagella, and elements of the cytoskeleton. They consist principally of two soluble proteins, α - and β -tubulin, each of about 55 kDa. Antibodies against β -Tubulin are useful as loading controls for Western Blotting. It should be noted that expression level of β -Tubulin may not be stable in certain cells. For example, expression of β -Tubulin in the adipose tissue is very low and therefore β -Tubulin should not be used as a loading control for these tissues.

Product Information

Catalogue No.	M2008
Host Species	Mouse
Clonality	Monoclonal
Isotype	IgG1
Immunogen	Full-length β -Tubulin protein of human
Antigen MW	55kD
Species Reactivity	Human, Rat, Mouse
Format	Purified IgG1 in PBS + 50% glycerol + 0.02% NaN ₃
Concentration	1 mg/ml
Quantity	100 μ g
Intended use	For research use only



Western blot analysis of Hela cell lysate (lane1), rat brain tissue lysate (lane2) and mouse brain tissue lysate (lane3) with β -Tubulin mouse mAb diluted at 1:5,000.

Applications

		Controls		Recommended* Dilution
		Positive	Negative	
IP Immunoprecipitation	n.t.	n.t.	n.t.	n.t.
WB Western Blotting	Yes	Cell lines & tissues	Not applicable	1:1,000 – 1:10,000
IHC (P) Immunohistochemistry (Paraffin)	n.t.	Cell lines & tissues	Not applicable	1:200 – 1:1,000
IHC (F) Immunohistochemistry (Frozen)	n.t.	Cell lines & tissues	Not applicable	1:200 – 1:1,000
IF Immunofluorescence	n.t.	Cell lines & tissues	Not applicable	1:200 – 1:1,000
ELISA	n.t.	n.t.	n.t.	n.t.

n.t. – antibody not tested for this application.

*Recommended dilutions are given as a guide only. Users should optimize antibody dilutions for their specific applications.

Storage

Caution: this product contains sodium azide (0.02 % NaN₃).

Freezing at -20°C in small aliquots is the optimal storage condition. Aliquotting minimizes damage due to freezing and thawing, as well as contamination introduced by pipetting from a single vial multiple times. Aliquots should be frozen and thawed only once, with any remainder kept at 4°C.

This product is stable for 12 months at -20°C.